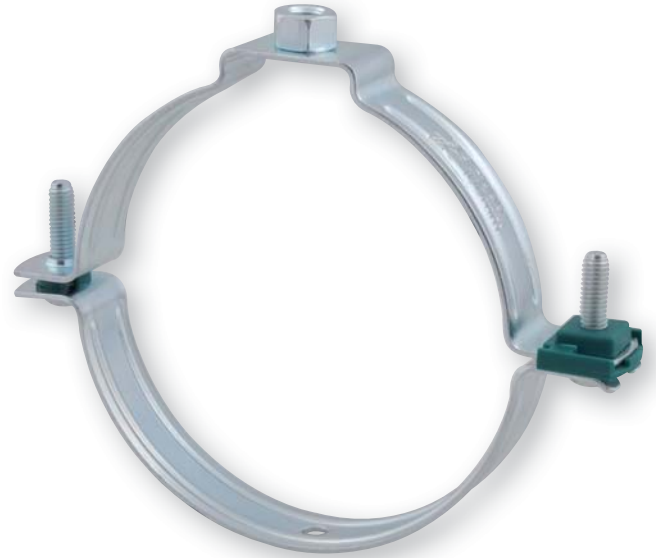


## BIS 4000 Clamp

For plastic pipes Ø 32 – 200 mm

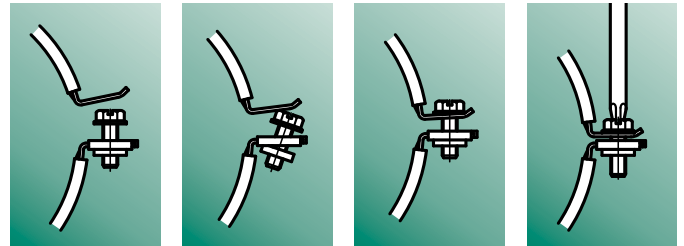
### Features & Benefits

- Two-screw clamp
- New patented quick locking system:
  - Will not open during installation
- With removable spacer washers, making the clamp suitable for either location or tight fixing
- Inside clamp diameter larger than outside pipe diameter for expansion or contraction of the pipe
- Inside profile to protect pipes from damage
- Material: Steel, Stainless steel
- Surface treatment: Zinc plated, P1000



### Surface treatment P1000

- Based on zinc coatings (microscopic zinc and aluminium plates)
- No risk of hydrogen embrittlement
- Thin layer possible 6-12 micron (no re-threading necessary)
- P1000 = 1.000 hours salt spray test (Hot dip galvanized = < 300 hours)
- Max. continuous working temperature 200°C
- Color: silver grey
- Free of: Chromium, Cadmium, Nickel, Lead, Mercury and Molybdenum (ELV2000/53/EG)



### Article table BIS 4000

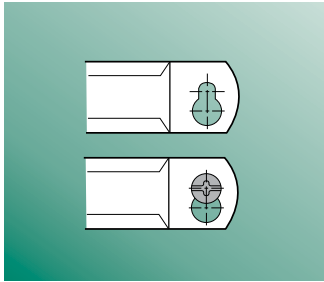
Zinc plated				Stainless steel					P1000				
D (mm)	BIS 4000	G	Box	D (mm)	BIS Bifix® 415 ->	BIS 4000	G	Box	D (mm)	BIS 3000 ->	BIS 4000	G	Box
32	444 3 032	M8	50	32	415 7 032 ->	444 7 032	M8	25	32	081 8 032 ->	444 8 032	M8	50
40	444 3 040	M8	50	40	415 7 040 ->	444 7 040	M8	25	40	081 8 040 ->	444 8 040	M8	50
50	444 3 050	M8	50	50	415 7 050 ->	444 7 050	M8	25	50	081 8 050 ->	444 8 050	M8	50
56	444 3 056	M8	50	56	415 7 056 ->	444 7 056	M8	25	56	081 8 056 ->	444 8 056	M8	50
63	444 3 063	M8	50	63	415 7 063 ->	444 7 063	M8	25	63	081 8 063 ->	444 8 063	M8	50
70	444 3 070	M8	50	70	415 7 070 ->	444 7 070	M8	25	70	081 8 070 ->	444 8 070	M8	50
75	444 3 075	M8	50	75	415 7 075 ->	444 7 075	M8	25	75	081 8 075 ->	444 8 075	M8	50
80	444 3 080	M8	50	80	415 7 080 ->	444 7 080	M8	25	80	081 8 080 ->	444 8 080	M8	50
90	444 3 090	M8	50	90	415 7 090 ->	444 7 090	M8	25	90	081 8 090 ->	444 8 090	M8	50
100	444 3 100	M8	50	100	415 7 100 ->	444 7 100	M8	25	100	081 8 100 ->	444 8 100	M8	50
110	444 3 110	M8	25	110	415 7 110 ->	444 7 110	M8	25	110	081 8 110 ->	444 8 110	M8	25
125	444 3 125	M8	25	125	415 7 125 ->	444 7 125	M8	25	125	081 8 125 ->	444 8 125	M8	25
160	444 3 160	M8	25	160	415 7 160 ->	444 7 160	M8	25	160	081 8 160 ->	444 8 160	M8	25
200	444 3 200	M8	25	200	415 7 200 ->	444 7 200	M8	25	200	081 8 200 ->	444 8 200	M8	25

# BIS 3000 Clamp

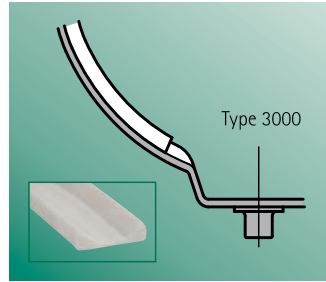
For plastic pipes Ø 32 – 200 mm

## Features & Benefits

- Two-screw clamp with 'keyhole closing'
- For rigid fixing point fastening it is necessary to use BIS Lining 3000 (Part No. 081 4 025)
- Inside clamp diameter larger than outside pipe diameter for expansion or contraction of the pipe
- Outside profile to protect pipes from damage
- Material: steel
- Surface treatment: zinc plated



■ With keyhole closing



■ Optional: BIS Lining 3000  
Part No. 081 4 025

## Article table BIS 3000

Zinc plated			
D (mm)	BIS 3000	G	Box
32	081 0 032	M6	25
40	081 0 040	M6	25
50	081 0 050	M6	25
32	081 1 032	M8	25
40	081 1 040	M8	25
50	081 1 050	M8	25
56	081 1 056	M8	50
63	081 1 063	M8	25
70	081 1 070	M8	50
75	081 1 075	M8	100
80	081 1 080	M8	50
90	081 1 090	M8	100
100	081 1 100	M8	50
110	081 1 110	M8	50
125	081 1 125	M8	50
140	081 1 140	M8	25
160	081 1 160	M8	25
180	081 1 180	M8	25
200	081 1 200	M8	25

United Kingdom  
Ireland

Walraven Ltd.  
Tel. +44 (0)1295 75 34 00  
sales.banbury@walraven.com



Other countries

Walraven International  
Tel. +31 (0)297 23 30 00  
export@walraven.com

