

Innovative fire stopping  
for optimum protection

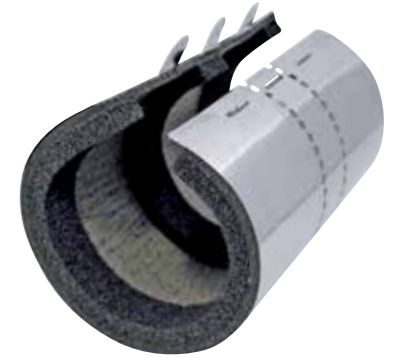


## Fire Stopping Solutions

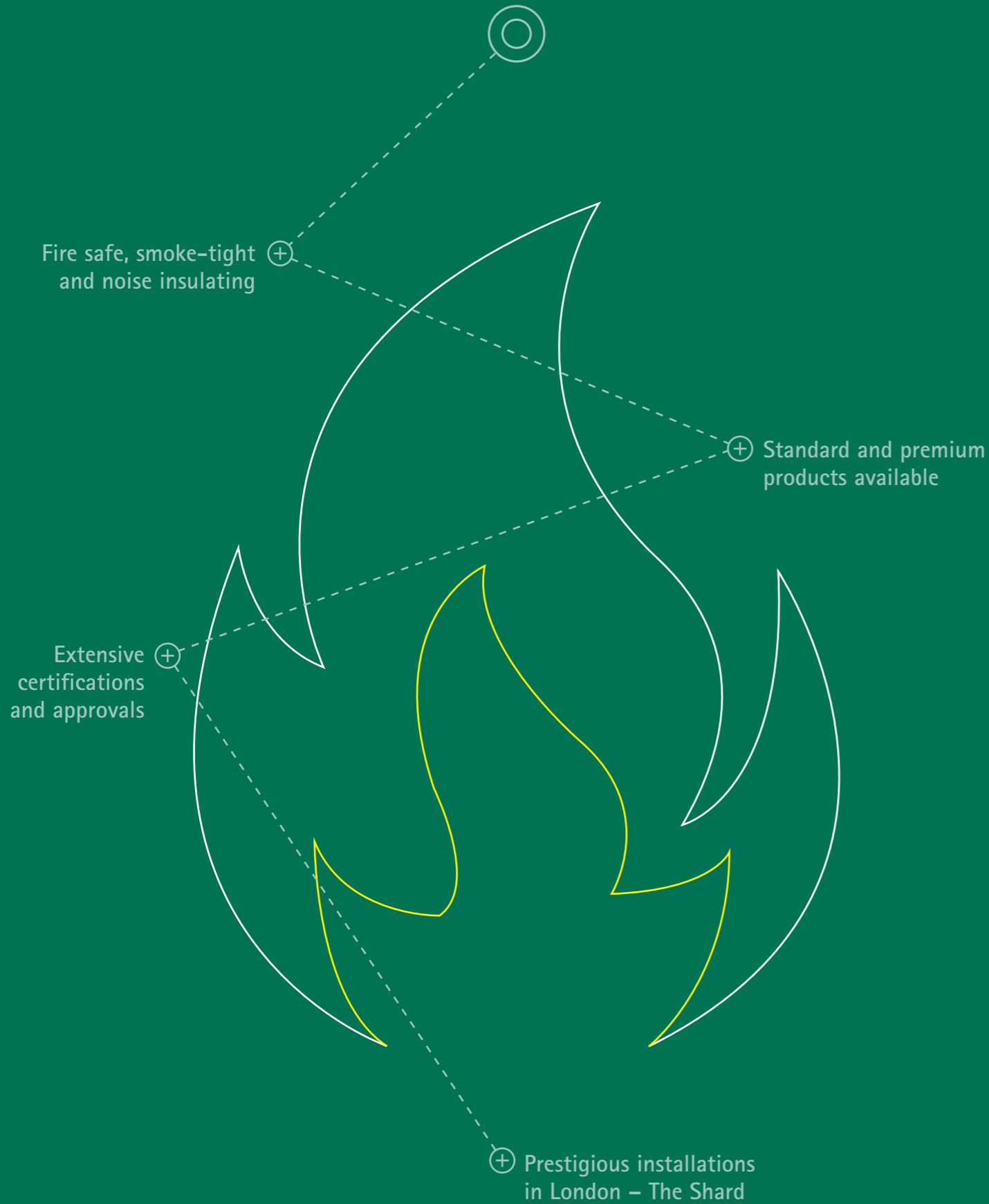


# Fire stopping solutions you can trust

We have been developing and manufacturing fire stopping products for over 20 years. The selection and correct installation of fire stops can ultimately save people's lives. All buildings are different, and it is important to consider not just the product you require, but also the environment and situation into which it is being installed.



Fire Stopping Solutions



## Our fire stopping product range includes:

### Pacifyre® Fire Collars

- Standard and premium ranges available
- Collars suitable for many plastic pipes, metal pipes and more challenging installation situations

### Pacifyre® Fire Sleeves

- Our flagship fire stop
- Unique product for more complex fire stopping requirements
- Installation case studies available online

### Pacifyre® Sealants and Mortar

- Easy to use sealants to prevent the spread of smoke and fire through joints in walls and floors

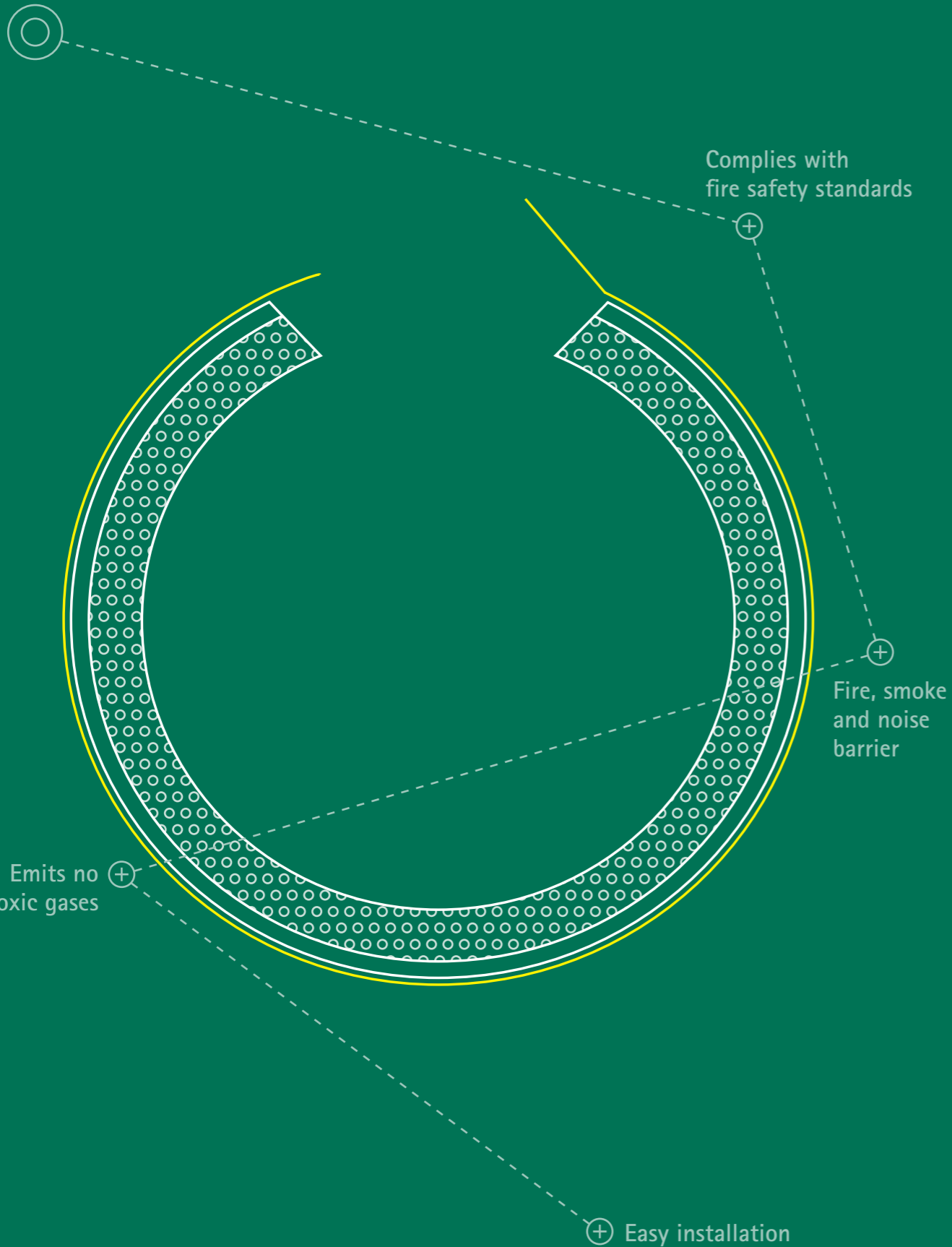
## We are proud to offer:

- ETA certified and CE Marked products
- Easy to install products to minimise risk of incorrect installation
- Products that are suitable for renovations and remedial fire stopping
- Unique product features to suit more complex building requirements
- Testing above and beyond standard requirements
- FREE Technical advice service including consultation and problem-solving
- Onsite training and support

*Walraven fire stopping solutions accompanied by our technical advice service offer reassurance to contractors when selecting the right fire stop for their needs.*

Find out more about fire stopping on our website: [walraven.com/en/fire-stopping-systems](http://walraven.com/en/fire-stopping-systems)  
 To contact our technical support email: [technical.uk@walraven.com](mailto:technical.uk@walraven.com)

Pacifyre® MK II



# Pacifyre® MK II Fire Sleeve

Our flagship fire stop – unique fire, smoke and noise barrier

## Broad safety applications

The Pacifyre® MK II Fire Sleeve is a single component fire sleeve that allows you to make an aperture for pipes smoke free and fire resistant. In homes, factories, hospitals, offices or other residential buildings the Pacifyre® MK II is installed around pipes through floors, ceilings, solid walls and modular walls. Pacifyre® MK II Fire Sleeves ensure fire compartments effortlessly comply with building regulations.

## When to use?

In accordance with building regulations for fire protection every building must be divided into fire compartments. Unprotected apertures for mechanical and electrical installations (pipes and cables) compromise the fire resistance of the walls, floors and ceilings of such a fire compartment. Therefore, it is important to close unprotected apertures in the proper way.

## Strong in fire resistance

Comprehensive fire testing shows that the Pacifyre® MK II Fire Sleeve complies amply with all standards. The sleeve is one of the few fire stops that, as well as being fire resistant, also offers good smoke sealing and prevents noise conduction. Importantly the fire sleeve also allows the pipe to expand and contract to ensure the integrity of the fire stop over time.



The Pacifyre® MK II Fire Sleeve has been extensively tested by independent authorities in various countries throughout Europe (according to EN 1366-3 resp. EN 13501-2). A summary of the results:

Fire resistance	Plastic pipes
Wall of aerated concrete blocks	EI 120
Modular wall	EI 120
Ceilings	EI 120



This product also has an ETA Approval ETA 20/0732. Visit [walraven.com/pacifyre](http://walraven.com/pacifyre) for all technical documents.



# Pacifyre® MK II Fire Sleeve

Fire, smoke and noise barrier

## Operational benefits

- Prevents:
  - The spread of fire
  - The spread of smoke
  - The conduction of noise
- Remains operational for decades without maintenance
- Expansion and contraction of the pipe remains possible
- Contains no dangerous materials
- Emits no toxic gases or smoke in the event of a fire

## Smoke seal

When a fire burns, it generates carbon dioxide, water vapor, carbon monoxide, particulate matter, chemicals and hazardous gases. Most victims of fires (ca. 95%) die from smoke or toxic gases, not from burns.

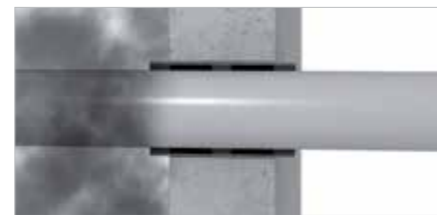
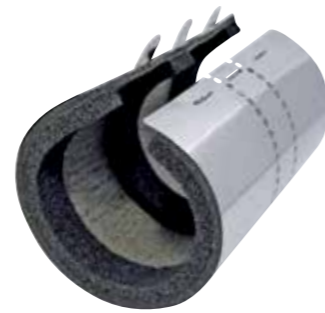
Thanks to its three foam strips the Pacifyre® MK II Fire Sleeve forms a perfect smoke seal. Even at lower temperatures the sleeve provides an effective cold smoke seal.

## Free pipe expansion and noise barrier

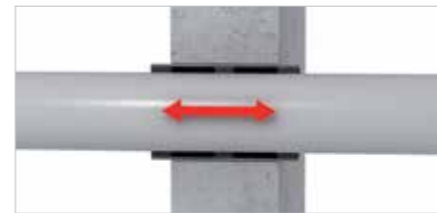
In normal day-to-day operation pipes shrink and swell. This can be because of temperature or pressure fluctuations or fluids running through the pipe. When such a pipe is in direct contact with the building, it produces noise.

Thanks to the three foam strips in the Pacifyre® MK II Fire Sleeve the pipe can expand and contract freely. Noise transmission from one room to another and contact noises are being absorbed and reduced.

*3 in 1 fire, smoke and noise barrier*



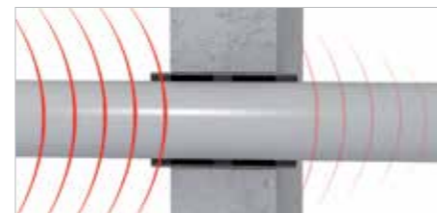
■ Perfect smoke seal



■ Free expansion and contraction



■ Reduction of contact noise



■ Reduction of noise transmission

# Pacifyre® MK II Fire Sleeve

## Installation Instructions

The Pacifyre® MK II Fire Sleeve is installed easily without using special fixing materials. Only one pair of hands is needed for the whole installation.

After wrapping the sleeve around the pipe, the closing tabs are bent and locked. Then slide the sleeve into the aperture. You then fill the rest of the opening with

fire resistant acrylic, foam or mortar. Fill out the Pacifyre® ID-Card and place it next to the aperture and the job is done.



1. Wrap the sleeve around the pipe



2. Fold the tabs in proper position



3. Bend and lock the tabs



4. Slide the sleeve into the aperture and centre it



5. Fill the opening with acrylic, foam or mortar



6. Pacifyre® ID-Card (Part No. 214999903)

## For nearly all situations



### Small spaces

Places with difficult accessibility (for example an aperture that is only accessible from one side) cause no problems. The Pacifyre® MK II Fire Sleeve can also be used when the distance between the wall or ceiling and pipe is very small.



### Close spacing

The Pacifyre® MK II Fire Sleeve is kept in place due to its closing tabs. It has no obtrusive fixing tabs, which is an advantage when parallel running pipes are installed. Thanks to its compact design the centre distance between pipes is very small.



### Any direction

The Pacifyre® MK II Fire Sleeve can be used for horizontal, vertical and even diagonal running pipes!

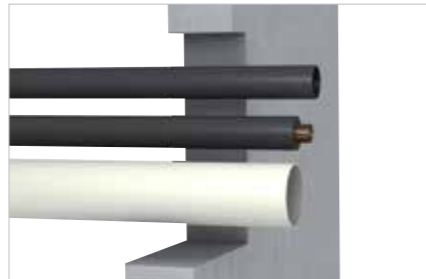


# Pacifyre® MK II Fire Sleeve

## Easy to install

### Installation benefits

- Simple and easy to install, without special training
- Just one sleeve per aperture
- Close wall distance
- Close spacing
- For pipes in any direction



1. Open aperture



2. Completely finished aperture

## The Pacifyre® MK II Fire Sleeve in action

At a temperature in excess of 140 °C the intumescent in the Pacifyre® MK II Fire Sleeve starts to swell.

With a plastic pipe the Pacifyre® MK II seals the aperture against fire by completely crushing the pipe. Smoke and fire have no

chance of entering the adjoining areas. The Pacifyre® MK II Fire Sleeve has protected those present and has given them time to reach safety.



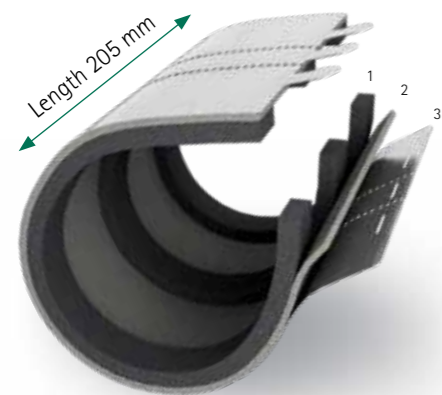
1. Fire breaks out in a fire compartment



2. The fire spreads and the residents are warned



3. The Pacifyre® MK II starts to work and the residents have time to reach safety



### Composition

The Pacifyre® MK II Fire Sleeve comprises of:

1. Three foam strips (smoke seal and noise barrier)
2. A layer of intumescent (seal in the event of a fire)
3. A sleeve of stainless steel for counter pressure and protection

# Pacifyre® MK II Fire Sleeve

## Selection tables

The Pacifyre® MK II Fire Sleeve has been tested and approved suitable for fire sealing non-insulated plastic pipes. See ETA 20/0732.

### Drilling table

Part No.	Allowance (mm)					
	FP 430		FP 550		FPM	
	min.	max.	min.	max.	min.	max.
2141xxxxxx	25	65	45	125	125	225
2151xxxxxx	25	65	45	125	125	225
2154xxxxxx	30	70	50	130	130	230
2158xxxxxx	40	80	60	140	140	240
2152xxxxxx	50	90	70	150	150	250

Drill Ø =

Pipe Ø + 2 x insulation + allowance\* or

Pipe Ø + allowance\*

\* Allowance = 2 x thickness MK II +

2 x min./max. joint width

For holes to be drilled: select your available drill size within the min./max. allowance given above.

### Plastic pipe

Pipe Ø (mm)	Part No.	Pipe Ø (mm)	Part No.
15 - 17	2151015017	104 - 113	2154108110
18 - 20	2151018020	120 - 128	2158123125
23 - 28	2154024026	131 - 139	2158135137
29 - 36	2154030032	136 - 144	2158138140
38 - 44	2154039041	155 - 164	2158159161
46 - 52	2154048050	175 - 184	2158180182
48 - 55	2154051053	195 - 204	2152198200
52 - 58	2154054056	<i>Other dimensions on request.</i>	
55 - 61	2154057059		
61 - 67	2154063065		
70 - 79	2154075077		
74 - 82	2154078080		
86 - 94	2154090092		
95 - 103	2154099101		

For technical documents see [walraven.com/pacifyre](http://walraven.com/pacifyre)

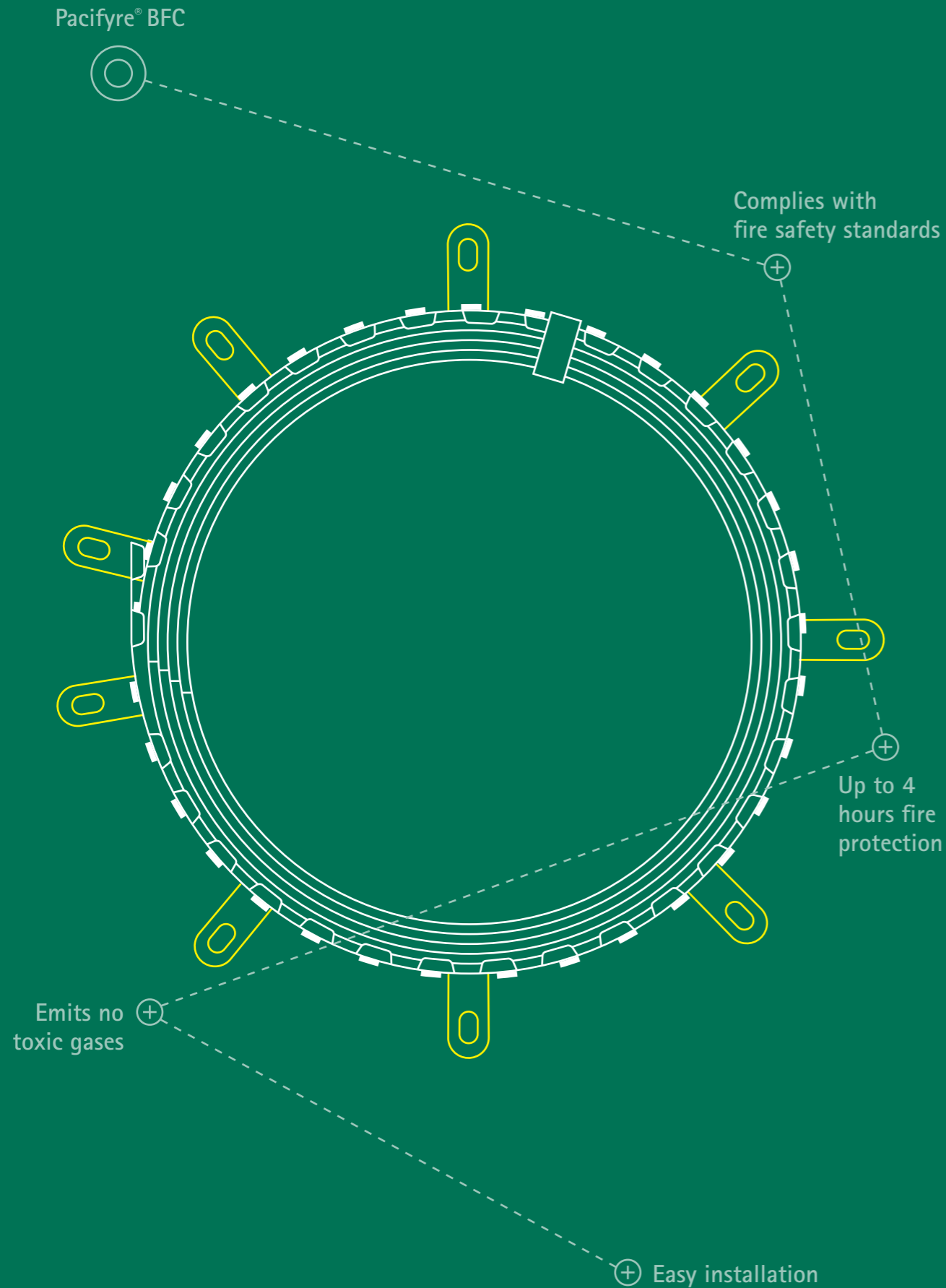
*Just one sleeve per aperture required!*



# Pacifyre® BFC Fire Collar

A great standard fire collar with added reassurance of ETA certification

- A fire collar for plastic (combustible) pipes up to Ø 160 mm
- For thin- and thick-walled pipes
- For flexible walls, solid walls and ceilings
- Up to 2 hours fire protection in wall penetrations
- Up to 4 hours fire protection on floor/ceiling penetrations



## Approvals

- ETA 17-0285
- CE marked

## Features and Benefits

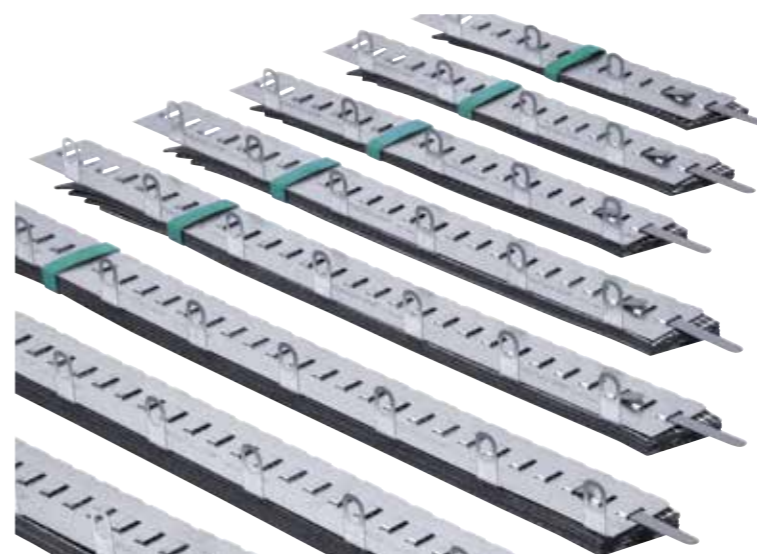
- Easy to install
- Suitable for damp conditions
- Oversized for increased flexibility in positioning
- Low height of 42.5 mm
- 2 collars per box

## Approved Pipes

- |                 |                       |
|-----------------|-----------------------|
| <b>Standard</b> | <b>Noise reducing</b> |
| ■ PVC           | ■ Blue Power          |
| ■ PE            | ■ Wavin SITECH        |
| ■ PP            | ■ Aquatherm Green     |
| ■ PP-R          | ■ Geberit Silent PP   |
| ■ Multilayer    | ■ POLO-KAL NG         |
|                 | ■ Rehau Raupiano Plus |
|                 | ■ Triplus 3           |

## Article Overview

Part No.	Pacifyre® BFC size	Pipe range Ø (mm)	Outer Ø (mm)	Inner Ø (mm)	# of fixing points needed
2133000050	50	≤ 50	70	56	2
2133000063	63	51 - 63	90	67	3
2133000075	75	64 - 75	100	80	3
2133000090	90	76 - 90	125	98	3
2133000110	110	91 - 110	150	118	3
2133000125	125	111 - 125	160	130	4
2133000140	140	126 - 140	180	145	4
2133000160	160	141 - 160	200	165	4



## Complementary products

- Pacifyre® A - Acrylic Fire Sealant (Part No. 2180100010)
- Pacifyre® FPM - Fire Protection Mortar (Part No. 2180015300)
- Pacifyre® Fixing Set 1 (Part No. 2121000024)

For technical documents see [walraven.com/pacifyre](http://walraven.com/pacifyre)



# Pacifyre® EFC Endless Fire Collar

The problem solver for multiple situations!

The Pacifyre® EFC is suited to more complex installations such as angled penetrations, multiple penetrations with zero distance between the pipes, corner penetrations and more. It is adjustable in size and can be modified on site, giving you maximum flexibility during installation. It can be used on insulated and non-insulated combustible pipes, as well as non-combustible pipes.

## High performance

The Pacifyre® EFC consists of a high performance intumescent material and stainless steel band and hooks to secure the fire collar to the wall or floor. In the event of a fire, the intumescent material expands with a high pressure and seals the opening against flames and smoke.



## Efficient

As only a small number of intumescent layers are required, one Pacifyre® EFC Fire Collar is sufficient to (fire proof) seal six pipes with an outer diameter of 110 mm, or 38 pipes with an outer diameter of 32 mm when adding the Pacifyre® Refill Sets for more stainless steel components.

## Features and benefits

### General

- Only one box for numerous penetrations and all pipe dimensions ( $\varnothing \leq 160$  mm)
- Expansion and contraction of the pipe remains possible\*
- Suitable for damp conditions
- Innovative, effective and safe

\* By using 4 mm (acoustic) PE-insulation

### Safety

- Prevents the spread of fire and smoke
- Strong intumescent fire strip
- Emits no toxic gases or smoke in the event of a fire
- Contains no dangerous materials

### Tests and Approvals

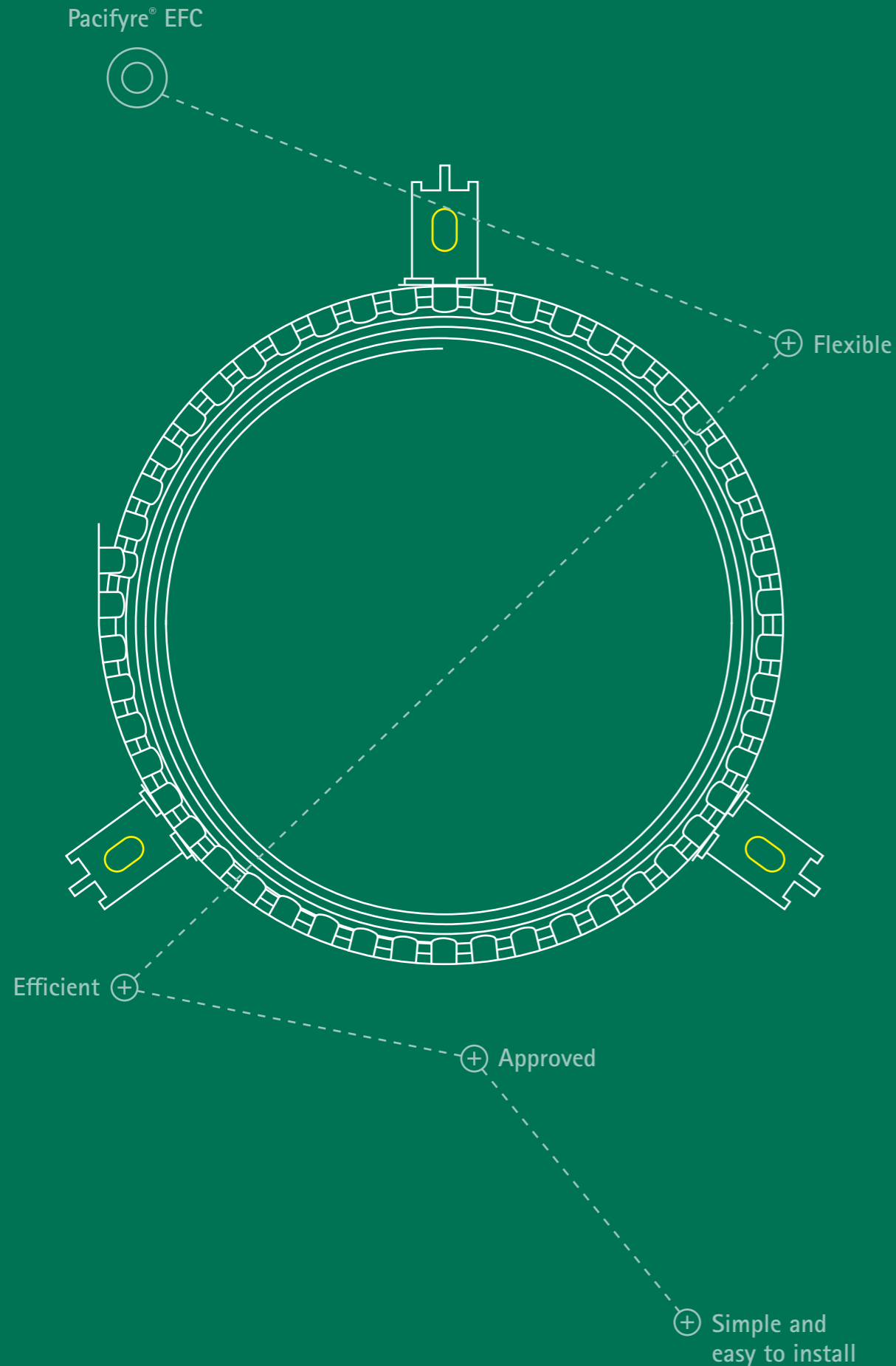
- Fire safe tested up to 240 minutes (EI)
- Tested according to EN 1366-3 and ETAG 026-2
- European approval: ETA 13/0793

### Installation benefits

- Simple and easy to install, without special training
- High flexibility due to close wall distance
- Max. 3 pipes through 1 fire collar ( $\varnothing \leq 75$  mm) when space in between is  $\leq 15$  mm
- Zero distance between fire collars is possible
- Only 3 fixing points for a fire collar of 110 mm
- Suitable for corner penetrations that are difficult to access
- The required length of the stainless steel and intumescent strip can be determined on the job site
- Only the exact amount of intumescent band is required: minimal use of material per penetration
- Left-over material can be attached to another Pacifyre® EFC Fire Collar
- Maintenance free

### Part No.: 2132100600

This carton box contains: 3 m stainless steel band, 10 m fire strip, 18 fixing brackets, 18 sets of fixings and 6 Pacifyre® EFC ID-Cards.



For technical documents see [walraven.com/pacifyre](http://walraven.com/pacifyre)



# Pacifyre® EFC Endless Fire Collar

## Applications

### Approved for

- Solid walls with a thickness of  $\geq 100$  mm made of e.g.
  - Mortared brick
  - Aerated concrete blocks
  - Reinforced concrete blocks
- Flexible walls (e.g. metal-stud) with a thickness of  $\geq 94$  mm
- Solid floors / ceilings with a thickness of  $\geq 150$  mm

### Approved pipes

- PVC pipes  $\varnothing \leq 160$  mm
- PE pipes  $\varnothing \leq 160$  mm
- PP pipes  $\varnothing \leq 160$  mm
- Mineral fibre pipe systems  $\varnothing \leq 160$  mm, such as:
  - Poloplast – Polokal NG
  - Wavin – SI Tech
  - Geberit – Silent PP
  - Rehau – Raupiano Plus
  - Coes Blue Power
  - Valsir – TRIplus
  - Mainpex – Mainpower
- Multilayer pipes  $\varnothing \leq 110$  mm, such as:
  - Fusiotherm Stabi
  - Uponor Unipipe
  - Alpex F50 / Alpex L
- Copper pipes  $\varnothing \leq 88,9$  mm
- (Stainless) Steel pipes  $\varnothing \leq 108$  mm

### Refill sets



- 3 m Stainless Steel Band



- 18 fixing brackets, 18 BIS Star Plugs, screws and rings



- Pacifyre® EFC ID-Card

### Approved insulations

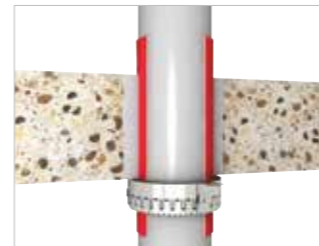
- Pipe systems can be insulated with:
- Synthetic rubber insulation (Armaflex, Kaiflex, Thermaflex, etc.) with a thickness of  $\leq 35$  mm
  - Polyethylene insulation with a thickness of  $\leq 4$  mm

### Approved seals

- The rest gap between pipe and wall or ceiling can be sealed with:
- Pacifyre® FPM Fire Protection Mortar



- Built-in situation light partition walls  $\geq 100$  mm



- Built-in situation ceilings  $\geq 150$  mm

# Pacifyre® EFC Endless Fire Collar

## Installation instructions



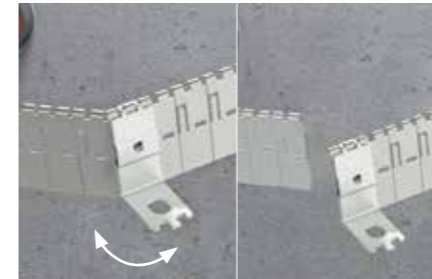
1. Install pipe and if desired apply insulation.



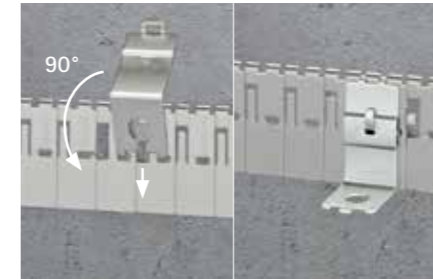
2. Make sure the annular space around the pipe is properly sealed and smoke tight with Pacifyre® FPM Mortar or equivalent.



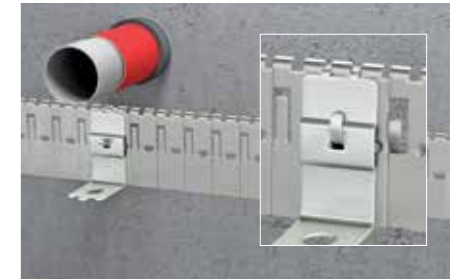
3. Wrap the fire strip (or insulation) around the pipe (note the number of layers required\*). Attach with an overlap of 15 mm.



4. Cut desired length of stainless steel strip\* by using fixing bracket. No additional tools needed.



5. Place a fixing bracket by bending a "tab of stainless steel band" 90° by using the long nose of the fixing bracket.



6. Place fixing bracket and fold "tab of stainless steel band" back over fixing bracket. Distribute the required amount of brackets equally over the stainless steel band.



7. At the end of the stainless steel strip bend 2 "tabs". Place both ends over each other and fold "tabs" back in place to close steel strip.



8. Fix to the wall or floor with the supplied plugs and screws. In drywall partitions, use threaded rods M6 and M8.



9. Apply a Pacifyre® ID-Card to the wall/floor for identification by inspection bodies.

\*See consumption table next page



# Pacifyre® EFC Endless Fire Collar

## Consumption table

### Combustible pipes (e.g. PVC / PE / PP)

Consumption of materials per collar		Pipe Ø (mm)									
		32	40	50	63	75	90	110	125	140	160
Intumescent	N° of layers	2	2	2	3	3	4	4	5 / 6*	6	6 / 8*
	Length (cm)	26	31	38	69	81	128	153	218 / 265*	293	330 / 450*
Stainless steel band	Sections (pcs)	12	14	16	19	22	25	29	33 / 34*	37	41 / 43*
	Length (cm)	18	20	24	29	33	39	45	51 / 52*	57	63 / 66*
Hooks	Amount (pcs)	2	2	2	3	3	3	3	4	4	4

Potential number of collars per 1 Pacifyre® EFC Carton Box		Pipe Ø (mm)									
		32	40	50	63	75	90	110	125	140	160
		38	32	26	14	12	7	6	4	3	3

\* Check the assembly instruction for more detailed information

All indications given are subject to change due to local conditions on site and are given only as a guide. The number of layers depends on the pipe material. Please see ETA-13/0793 for more details.

### Non-combustible pipes

Detailed information for non-combustible pipes can be found in the assembly instruction (placed in the Pacifyre® EFC Carton Box) or on [www.walraven.com/pacifyre](http://www.walraven.com/pacifyre).

*One EFC carton will create multiple collars of various sizes!*

# Pacifyre® EFC Endless Fire Collar

## Special applications



■ Zero distance possible between the collars (non-insulated pipes).



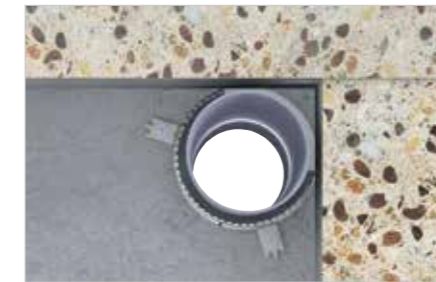
■ Zero distance possible between the collars (insulated pipes).



■ Multilayer pipes up to outer diameter 110 mm insulated with synthetic rubber.



■ Socket penetrations.



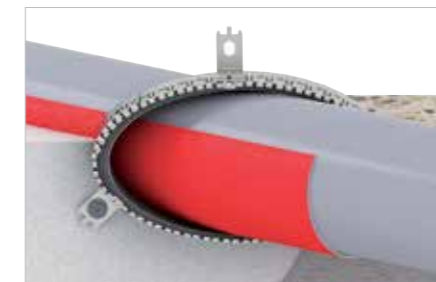
■ Suitable for corner penetrations (¾ fire collar). Distance between wall and pipe ≤ 10 mm.



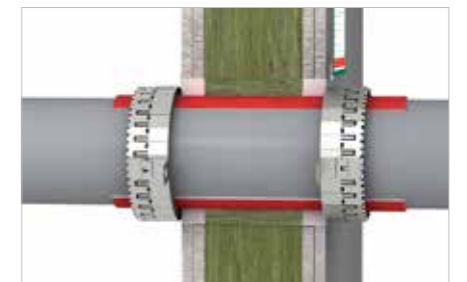
■ Angled penetrations.



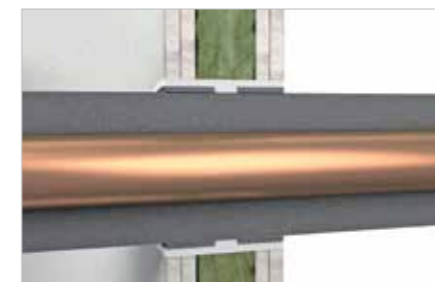
■ Multiple penetrations (max. 3 pipes through 1 Fire Collar). Distance between pipes ≤ 15 mm.



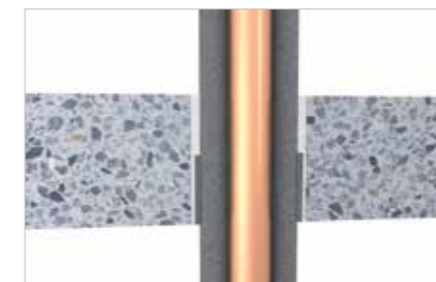
■ Oval shaped installations for angled penetrations.



■ Penetration through metal stud wall sealed with loose mineral wool and Pacifyre® FPM Fire Protection Mortar.



■ Non-combustible pipes with insulation into the wall.



■ Non-combustible pipes with insulation into the floor.



■ Non-combustible pipes with a collar on the underside of the floor.

# Pacifyre® AWM III Fire Collar

High spec fire collar for complex installations

The Pacifyre® AWM III Fire Collar is an innovative collar suitable for a range of applications where a standard fire collar may not be appropriate.

It can be used to fire seal plastic (combustible) pipes up to Ø 200 mm in walls and ceilings. It is easily installed and can be fitted to provide added noise insulation benefits. Our AWM Max collar can be used for larger pipes up to Ø 400mm.



## Applications

### Approved pipes / pipe systems in EI240 quality:

- Noise reducing pipe systems e.g.:
  - Friatec: Friaphon®, dBlue
  - Geberit: Silent-db20, Silent-PP
  - Wavin: Wavin AS, SiTech
  - PipeLife: PP Master
  - Rehau: Raupiano PLUS
- Combustible pipe systems (up to outer diameter 200 mm) in all common pipe materials, e.g.:
  - PVC
  - PP
  - PE
  - PE-X
  - ABS or ASA
- Pipes (up to Ø 200 mm) for central dust extraction and pneumatic dispatch systems

### Approved insulations and seals:

- PE-noise insulation ≤ 9 mm
- Synthetic rubber insulation ≤ 32 mm
- ≤ 10 mm Pacifyre A Fire Protection Acrylic Sealant
- ≤ 10 mm mineral wool (loose)
- Mortar, plaster, concrete (e.g. Pacifyre® FPM Fire Protection Mortar)

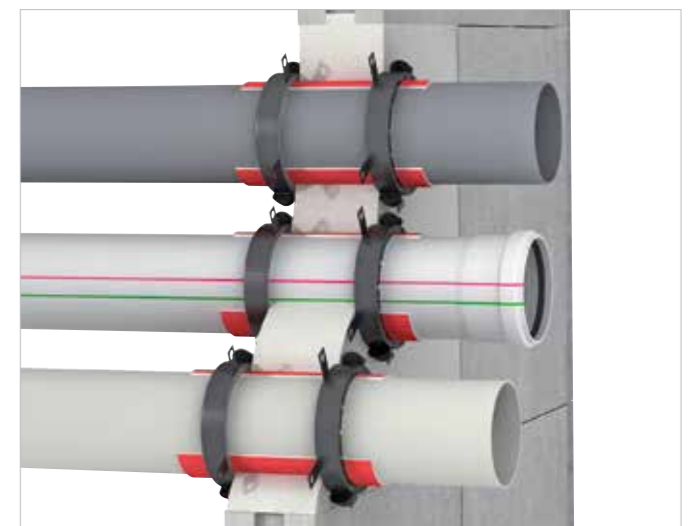
**Note: Walraven recommends to mark each individual penetration with a Pacifyre® AWM III Fire Collar by means of a Pacifyre® ID-Card.**

### Tests and Approvals

- Tested according to EN 1366-3
- European approval: ETA 13/0906
- CE Marked

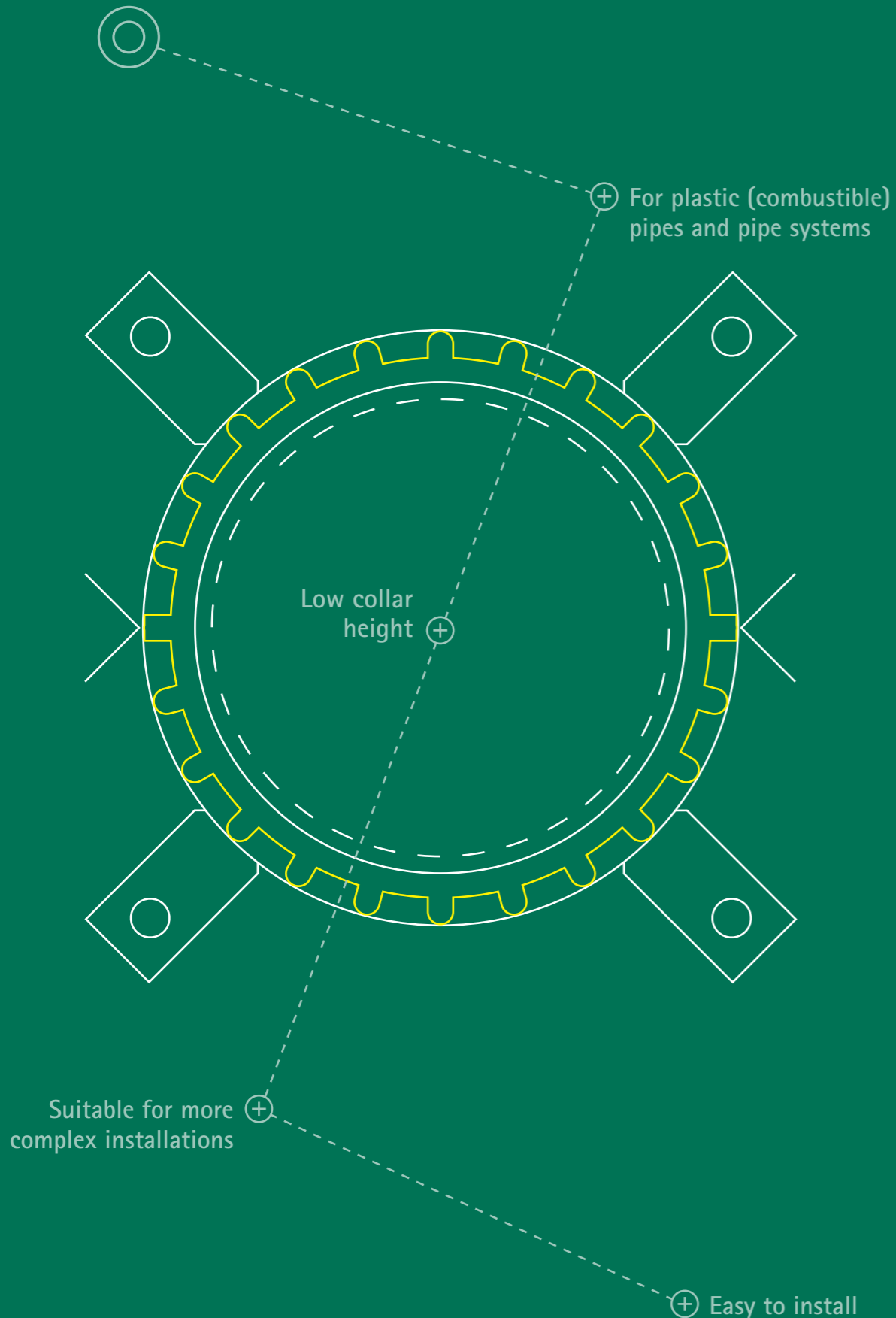
## Features and benefits

- Zero distance is possible between fire collars
- Low collar height, allowing building of bends, sockets and T-joints close to the wall or ceiling
- In problematic built-in situations the use of an oversized collar is permitted (up to max. 3 sizes bigger)
- Suitable for damp conditions
- Should be fixed on both sides of the wall / ceiling
- Easily installed due to 2 part collar construction
- Various finish possibilities, e.g.: acrylic sealant, mortar, etc.

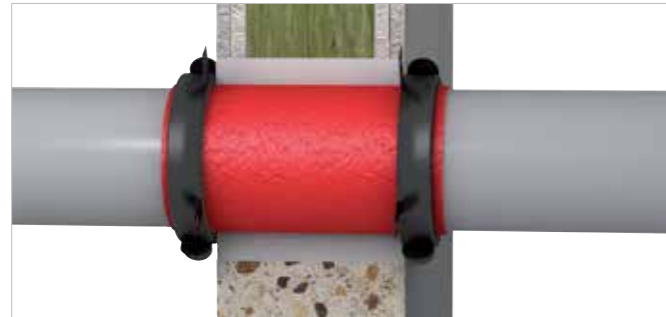


■ Aperture with optional noise insulation

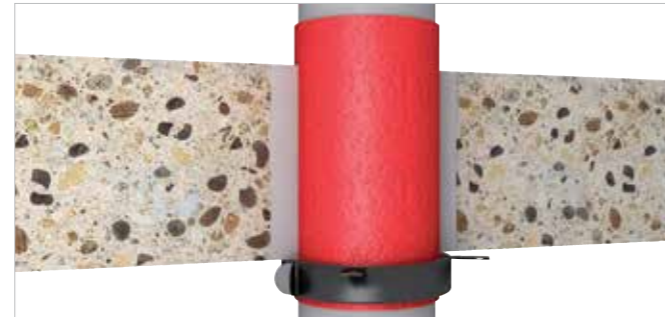
Pacifyre® AWM III



# Pacifyre® AWM III Fire Collar



■ Built-in situation solid and light partition walls ≥ 100 mm



■ Built-in situation ceilings ≥ 150 mm

## Technical details

Pipe		Fire Collar		Part No.	Number of fixing tabs
Outer diameter (mm)	Inner diameter (mm)	Outer diameter (mm)	Height (mm)		
32	38	47	26	2135032034	2
40	46	55	26	2135040042	2
50	56	65	26	2135050052	2
63	69	82	26	2135063065	4
75	81	94	26	2135075077	4
90	96	114	26	2135090092	4
100/110	116	134	26	2135110112	4
125	132	150	40	2135125125	4
135/140	144	168	40	2135140140	4
160	164	188	40	2135160160	4
180	184	218	40	2135180180	4

Other dimensions on request.

## The right combination

### Pacifyre® A Acrylic Fire Sealant

For fire resistance and smoke tight filling of annular holes or joints ≤ 10 mm.  
Part No. 2180100010



### Pacifyre® FPM Fire Protection Mortar

Fire resistant and smoke tight mortar (A1/M60) for safe sealing of annular holes and joints.  
Part No. 2180015300



### Pacifyre® ID-Card

For marking, identification and inspection. For all Pacifyre® pipe penetrations.  
Part No. 2149999903 (card or sticker)



# Pacifyre® AWM III Fire Collar

## Installation instructions



1. Install pipe and if necessary apply noise insulation



2. Ensure smoke tight seal of the annular hole (e.g. with Pacifyre® FPM Fire Protection Mortar or Pacifyre A Fire Protection Acrylic Sealant)



3. Select the correct collar size (in problematic built-in situations the use of an oversized collar is permitted up to max. 3 sizes bigger)



4. Drill (bending and sliding of fixing tabs is permitted)



5. Fix using the screws supplied



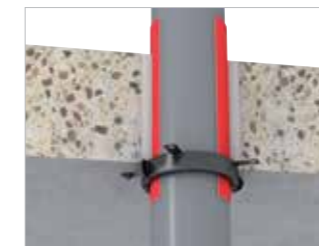
6. Apply the Pacifyre® ID-Card

Note: The built-in guidelines of the general building regulations must be adhered to.

## Application possibilities



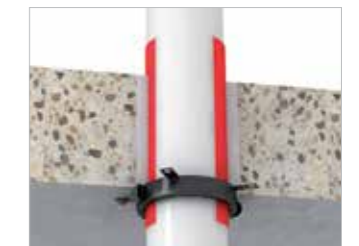
■ Zero distance possible between the collars



■ Combustible pipes up to 200 mm outer diameter



■ Fixing tabs mortared (90° reversed)



■ With PE-Insulation ≤ 9 mm (or ≤ 32 mm synthetic rubber insulation)



■ Bends directly under the ceiling



■ Also suitable for diagonal penetrations



■ T-joint close to penetration

For technical documents see [walraven.com/pacifyre](http://walraven.com/pacifyre)



# Pacifyre® A and S Fire Sealants

For preventing the spread of fire and smoke through joints in walls and floors

## Pacifyre® A: Acrylic Fire Sealant

### Features and Benefits

- Fire resistant and smoketight up to 4 hours
- For sealing annular joints around pipes, fire collars and fire sleeves or wraps
- For sealing cracks in concrete and plaster
- Excellent adhesion to many porous substrates
- Activation temperature  $\geq 120\text{ }^{\circ}\text{C}$
- Temperature resistant between  $-20\text{ }^{\circ}\text{C}$  -and  $+80\text{ }^{\circ}\text{C}$
- Application temperature between  $+5\text{ }^{\circ}\text{C}$  and  $+30\text{ }^{\circ}\text{C}$
- Indoor emission level A+
- Colour-fast, waterproof and paintable after curing
- Remains elastic after curing
- Skin formation in approx. 20 min.
- Shrinkage approx. 15% (DIN 52451)

## Pacifyre® S: Silicone Fire Sealant

### Features and Benefits

- Fire resistant and smoketight up to 4 hours
- For sealing annular joints around pipes, fire collars and fire sleeves or wraps
- Very good adhesion to most substrates
- 16 Shore A hardness
- Temperature resistant between  $-10\text{ }^{\circ}\text{C}$  -and  $+140\text{ }^{\circ}\text{C}$
- Application temperature between  $+5\text{ }^{\circ}\text{C}$  and  $+30\text{ }^{\circ}\text{C}$
- Indoor emission level A+
- Colour-fast and UV-stable
- Remains permanently elastic after curing
- Skin formation in approx. 20 min.
- Curing rate 1mm/24h
- Fire class B1 (DIN 4102-2)

### Article Overview

Product	Part No.	ETA	DoP	Colour	Cont.	Pack 1
Pacifyre® A Acrylic Fire Sealant	2180100010	ETA 16/1008 ETA 22/037	0749 CPR 16-1008	White	300 ml	12
Product	Part No.	ETA	DoP	Colour	Cont.	Pack 1
Pacifyre® S Silicone Fire Sealant	2180100020	ETA 16/1007	0749 CPR 16-1007	White	300 ml	12

### Pacifyre® A and S Complementary products

- Pacifyre® MK II (215xxxxxxx)
- Pacifyre® EFC (2132100x00)
- Pacifyre® BFC (2133000xxx)
- Pacifyre® ID-Card/Sticker (2149999903)

### Easy to install



1. Slide the sleeve into the aperture and centre it



2. Put some mineral wool as backfilling, fill 25 mm in the depth with Acrylic or Silicone Fire Sealant



3. Fix Pacifyre® ID-Card (Part No. 2149999903)

For technical documents see [walraven.com/pacifyre](http://walraven.com/pacifyre)



Pacifyre® A and S



Tested and approved



Excellent adhesion to most substrates



For use in walls and floors



Fire resistant and smoke tight



# Pacifyre® FPW Fire Protection Wrap

For various types of combustible pipes

Pacifyre® FPW Fire Protection Wrap can be installed as a penetration seal around various types of combustible pipes such as PP, PVC, PE and many more up to a diameter of Ø 160 mm.

The Pacifyre® FPW Fire Protection Wrap is an intumescent strip which starts expanding at a temperature above 180° C. It is provided with a self-adhesive layer to allow an easy installation.



## Features and benefits

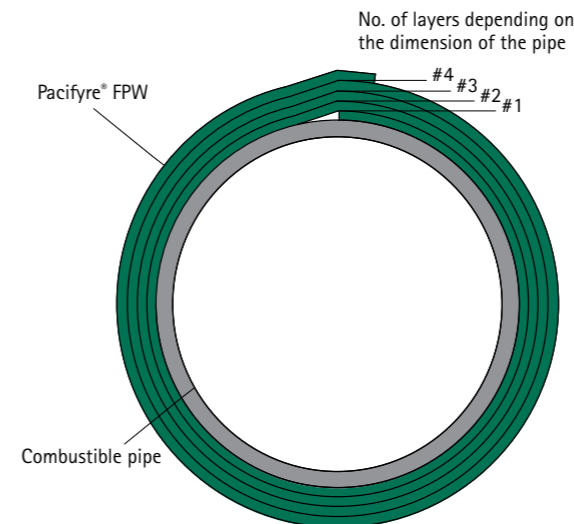
- For application in flexible walls, rigid walls and rigid floors
- Suitable for combustible pipes with intended use as rainwater, sewage, gas, drinking water and heating or cooling
- For various combustible pipe materials such as PP-H, PVC and PE
- Suited for certain branded pipes
- Easy to install without any additional fixing material
- Only 1 roll for numerous penetrations
- Self adhesive
- With a fire resistance up to EI 120 U/U
- Tested according to EN 1366-3 and European approval: ETA-22/022

## Technical details

- Dimension: 9.2 m x 50 mm x 2.0 mm
- Self-adhesive over entire length
- Part No. 2122250920

Detailed specifications for identification and performance criteria relevant for fire safety with regard to the construction products can be found in the DoP-0761-CPR-22-0022 and the ETA-22/0022. These can be viewed at [walraven.com/pacifyre](http://walraven.com/pacifyre).

The verification and assessment methods on which this European Technical Assessment is based lead to the assumption of a working life of at least 25 years for the Pacifyre® FPW – Fire Protection Wrap.



*Fast and effective - only one roll for numerous penetrations*



Pacifyre® FPW



+ Easy to use due to self adhesive layer

+ One roll for many applications

+ For use in walls and floors

+ A working life of at least 25 years

# Pacifyre® FPW Fire Protection Wrap

## Installation instruction

### Easy to install

The Pacifyre® FPW Fire Protection Wrap is installed easily without using extra fixing materials. Only one pair of hands is needed for the whole installation.

After wrapping the Pacifyre® FPW around the pipe it can be slid into the right position, flush to the surface of the supporting construction.

After this the gap needs to be filled with loose mineral wool and sealed with Pacifyre® A Acrylic sealant. Fill out the Pacifyre® ID-Card and place it next to the penetration and the job is done.



1. Clean the pipe and check the dimensions.



2. Wrap around the required amount of layers of FPW.



3. Close the gap between the wrap and the wall / floor with loose mineral wool.



4. Seal the gap with Pacifyre® A Acrylic Sealant (t = 10 mm).



5. Flatten the Acrylic with a jointing knife or trowel.



6. Fill out and place the Pacifyre® ID Card next to the penetration.

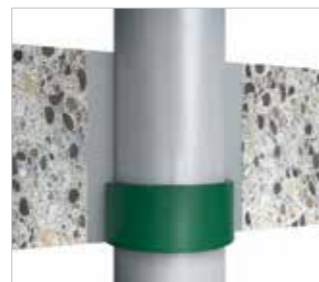
### Installation options



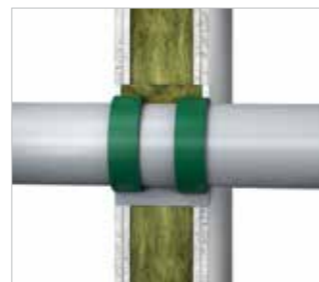
Combustible pipes made of different materials up to Ø 160 mm EI 120 U/U.



Multilayer pipes with and without synthetic rubber insulation up to Ø 110 mm EI 120 U/C.

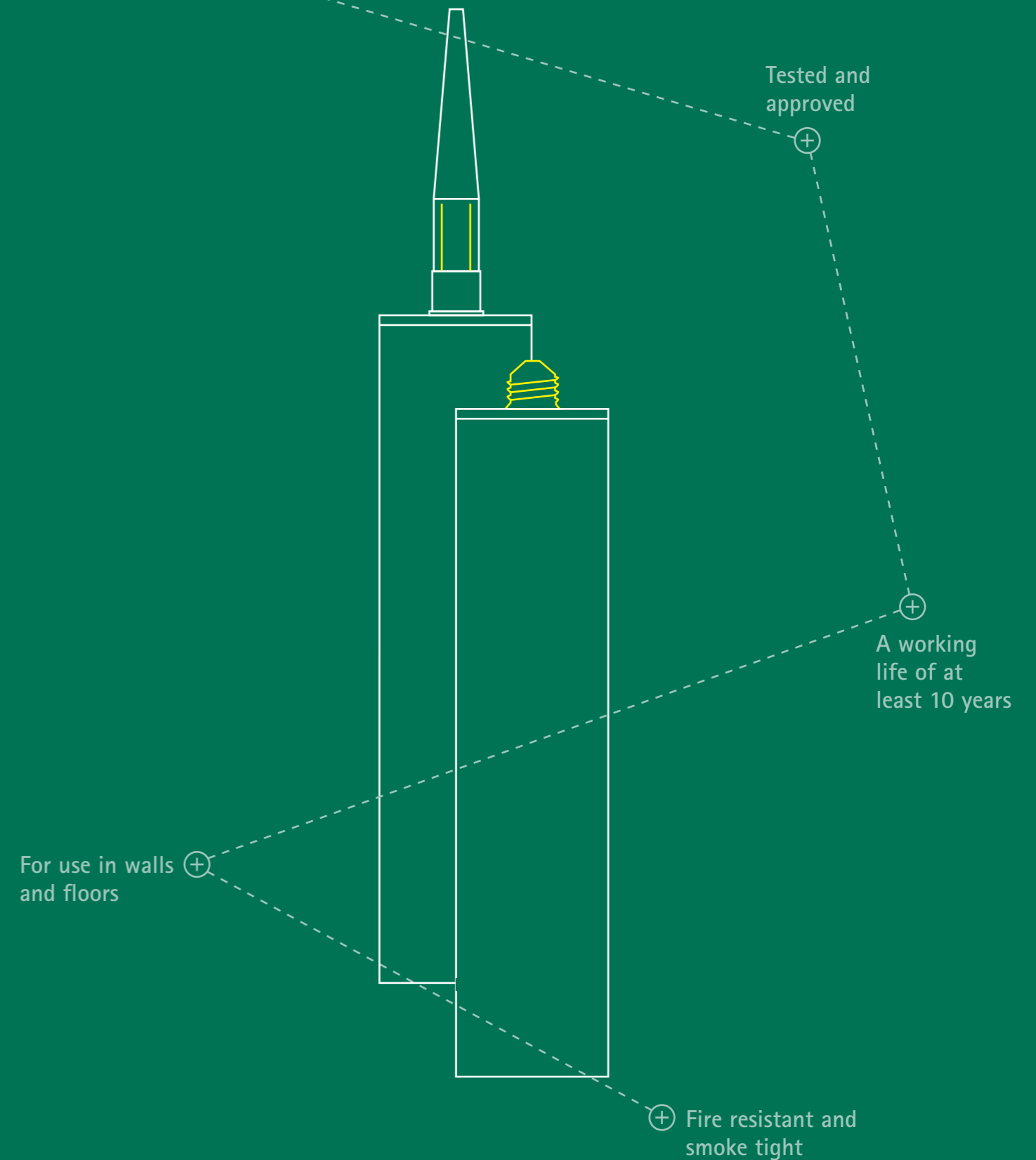


Floor penetration with an installation of the Pacifyre® FPW just on the underside.



Penetration through flexible and rigid walls ≥ 100 mm.

Pacifyre® G



# Pacifyre® G Graphite Fire Sealant

Perfect solution for smaller pipes & cables

Pacifyre® G Graphite Fire Sealant can be used as a penetration seal around various technical installations. Combustible pipes, multi-layer pipes with and without insulation, metal pipes with insulation and also small cable bundles are certified to be sealed with the Pacifyre® G.

Detailed specifications for identification and performance criteria relevant for fire safety with regard to the construction products can be found in the DoP-0749 CPR 22-023 and the ETA-22/0023. These documents can be found on [www.walraven.com/pacifyre](http://www.walraven.com/pacifyre).

The verification and assessment methods on which the ETA of the Pacifyre® G is based lead to the assumption of a working life of at least 10 years.

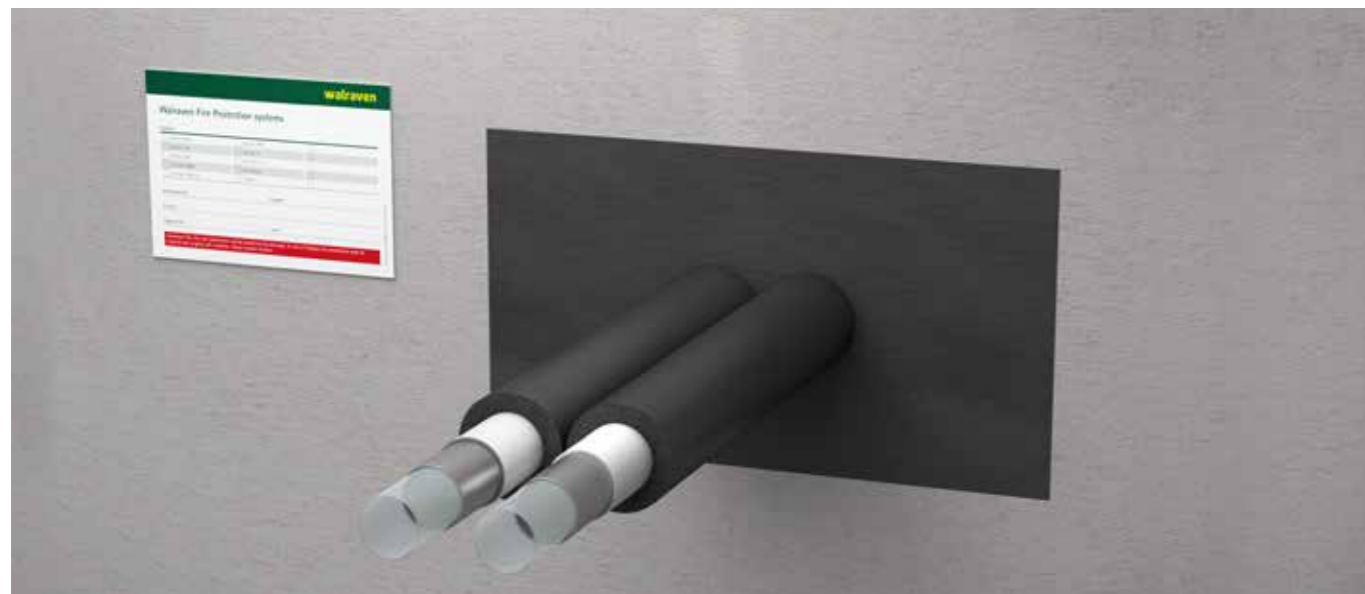


## Features and benefits

- For various combustible pipe materials such as PP-H, PVC and PE up to EI 120 U/U.
- Suitable for insulated metal pipes up to EI 120 C/U.
- Suitable for insulated and non-insulated multi-layer pipes up to EI 120 U/C.
- Single cables up to Ø 21 mm and cable bundles up to Ø 50 mm, up to EI 120.
- Shelf life of 12 months.
- Tested according to EN 1366-3.

## Technical details

- Part No. 2180100040
- Content: 300 ml
- Colour: Grey



# Pacifyre® G Graphite Fire Sealant

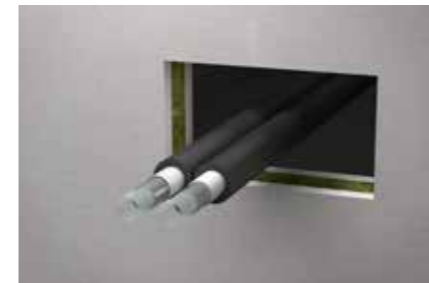
Installation instruction

## Easy to install

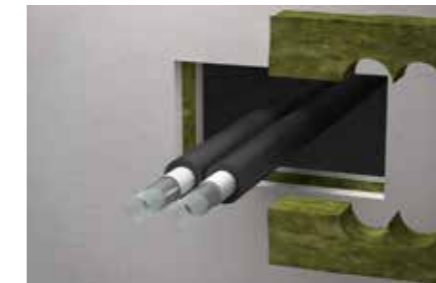
The Pacifyre® G Graphite Fire Sealant is an acrylic based intumescenting paste that will heavily expand in case of fire.

After closing the opening by placing a mineral wool board as a backfilling, the Pacifyre® G can be easily applied with a standard cartridge gun.

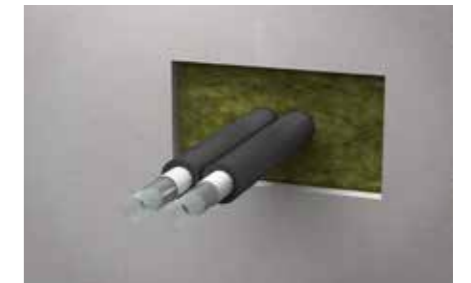
To receive a nice surface the material can be moistened and flattened by a jointing knife or a trowel. Fill out the Pacifyre® ID-Card and place it next to the penetration and the job is done.



1. Clean the opening and check the dimensions.



2. Place the pre-cut mineral wool boards.



3. Check that the distance from the surface of the wall to the board is 25 mm.



4. Apply the Pacifyre® G.

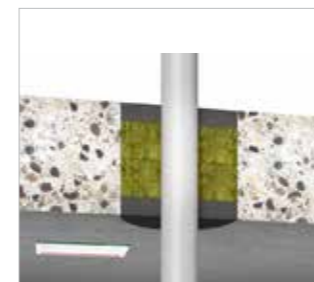


5. Flatten the Pacifyre® G with a jointing knife or trowel.

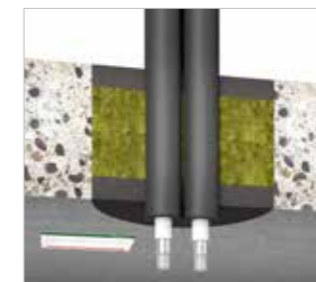


6. Place the filled out Pacifyre® ID-Card next to the penetration.

## Installation options



Floor penetrations with combustible pipes made of different materials up to Ø50 mm EI 120 U/C.



Floor penetrations with insulated composite plastic pipes including aluminium, with combustible insulation up to Ø32 mm EI 120 U/C.



Wall penetrations with composite plastic pipes including aluminium up to Ø32 mm EI 120 U/C.



Wall penetrations with sheathed cables up to 21 mm or cable bundles up to 50 mm EI 120.

# Coming soon in 2023

## Pacifyre® FPC Fire Protection Collar

A high quality fire protection collar that will secure a fire resistance up to EL120 U/U for a range of combustible pipe penetrations in walls and floors up to a diameter of 315mm.



## Pacifyre® Fire Batt

A mineral fibre board with fire resistant coating for sealing larger openings quickly and easily.



## Pacifyre® F 2k Foam

A rigid 2-component expansion foam for 2hr fire resistant and smoke tight closing of bulkheads around pipes and cables, cable trays, conduits and cavities.



# Technical Support and Advice

Our **Fire Stopping Specialist** is ready to guide you through the selection and installation of the correct fire stop products for your project. You can take advantage of our knowledge about the regulations, our easy-to-install, quality products and our advice and support throughout your project.

Call : 01295 753400

Email : [technical.uk@walraven.com](mailto:technical.uk@walraven.com)



Subscribe to our emails to be the first to hear about our new product launches.  
Go to: [walraven.com/en/newsletter](https://www.walraven.com/en/newsletter)



## Find out how we can help

Would you like to find out more about any of the solutions described in this brochure?

Or would you like to discuss how we could help you find the best possible solution for your project? Get in touch today!

### United Kingdom Ireland

---

#### Walraven Ltd.

18 Wildmere Industrial Estate  
Banbury (GB)  
Oxon, OX16 3JU  
Tel. +44 (0)1295 75 34 00  
sales.uk@walraven.com

### Walraven Group

---

Mijdrecht (NL) · Tienen (BE) · Bayreuth (DE) · Banbury (GB) · Malmö (SE) · Grenoble (FR) · Barcelona (ES) · Kraków (PL)  
Mladá Boleslav (CZ) · Moscow (RU) · Kyiv (UA) · Danville (US) · Shanghai (CN) · Dubai (AE) · Budapest (HU) · Mumbai (IN)  
Singapore (SG) · Burlington (CA)



GB